

Installing DevPartner®

DevPartner Studio Professional Edition 8.2
DevPartner for Visual C++ BoundsChecker Suite 8.2



Technical support is available from our Technical Support Hotline or via our FrontLine Support Web site.

Technical Support Hotline:
1-888-686-3427

FrontLine Support Web Site:
<http://frontline.compuware.com>

This document and the product referenced in it are subject to the following legends:

Access is limited to authorized users. Use of this product is subject to the terms and conditions of the user's License Agreement with Compuware Corporation.

© 2007 Compuware Corporation. All rights reserved. Unpublished - rights reserved under the Copyright Laws of the United States.

U.S. GOVERNMENT RIGHTS

Use, duplication, or disclosure by the U.S. Government is subject to restrictions as set forth in Compuware Corporation license agreement and as provided in DFARS 227.7202-1(a) and 227.7202-3(a) (1995), DFARS 252.227-7013(c)(1)(ii)(OCT 1988), FAR 12.212(a) (1995), FAR 52.227-19, or FAR 52.227-14 (ALT III), as applicable. Compuware Corporation.

This product contains confidential information and trade secrets of Compuware Corporation. Use, disclosure, or reproduction is prohibited without the prior express written permission of Compuware Corporation.

DevPartner[®] Studio and BoundsChecker are trademarks or registered trademarks of Compuware Corporation.

Adobe Acrobat[®] Reader copyright © 1987-2006 Adobe Systems Incorporated. All rights reserved. Adobe, Acrobat, and Acrobat Reader are trademarks of Adobe Systems Incorporated.

All other company or product names are trademarks of their respective owners.

US Patent Nos.: 5,987,249, 6,332,213, 6,186,677, 6,314,558, and 6,016,466

May 4, 2007

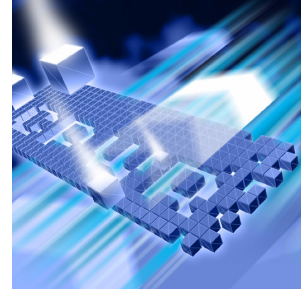


Table of Contents

Preface

Who Should Read This Manual	v
What's New in DevPartner Studio	v
Conventions Used In This Manual	vi
For More Information	vi

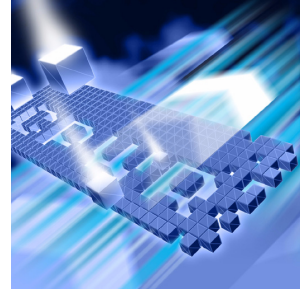
Chapter 1

DevPartner Installation

System Requirements	1
Supported Environments	2
Microsoft .NET Framework	3
Features Not Available in DevPartner 8.0 and Beyond	3
Receiving Your License File	3
DevPartner License Considerations	4
Installation and Licensing for Remote Data Collection	5
DevPartner Triggering of Firewall Alarms	5
Installed Features	6
Side-by-Side Visual Studio Operation	6
Installation	7
Troubleshooting Your DevPartner Installation	9
Migrating DevPartner Code Review Custom Rules and User Preferences	9
Prior to the Migration	10
Migrating the Rules Database	10
Migrating the Preferences Database	11

Index

Preface



- ◆ Who Should Read This Manual
- ◆ What's New in DevPartner Studio
- ◆ Conventions Used In This Manual
- ◆ For More Information

This manual describes how to install your Compuware® DevPartner Studio® software.

Who Should Read This Manual

This manual is intended for those installing DevPartner Studio in either a single-seat or concurrent use environment.

This manual assumes that you are familiar with the Microsoft Windows interface and the installation of Windows software.

What's New in DevPartner Studio

DevPartner Studio version 8.2 introduces three new features:

- ◆ DevPartner Studio now supports the Windows Vista operating system (Business, Enterprise, and Ultimate editions).
- ◆ You can now export session data in XML format from the error detection, code review, and Performance Expert features, adding to the previous XML export capability of performance analysis and coverage analysis data.
- ◆ You can now install the System Comparison utility separately, without requiring installation of the full DevPartner Studio product.

Conventions Used In This Manual

This book uses the following conventions to present information.

- ◆ Screen commands and menu names appear in **bold typeface**. For example:
Choose **Item Browser** from the **Tools** menu.
- ◆ File names appear in monospace typeface. For example:
The *Understanding DevPartner* manual (`Understanding DevPartner.pdf`) describes...
- ◆ Variables within computer commands and file names (for which you must supply values appropriate for your installation) appear in *italic monospace type*. For example:
Enter `http://servername/cgi-win/itemview.dll` in the Destination field...

For More Information

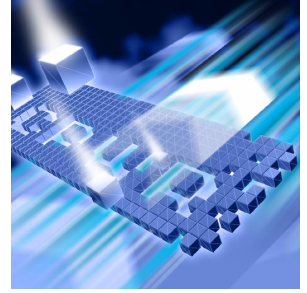
You can use the feature-level online help to learn more about the DevPartner Studio software's functions and procedures.

You can use the following resources to learn more about DevPartner Studio components. Manuals in Adobe Acrobat (.pdf) format are available through the InfoCenter option in the **Start > Compuware DevPartner** menu, and are also included on your DevPartner CD.

- ◆ The *Distributed License Management Licensing Guide* describes DevPartner licensing.
- ◆ The *Understanding DevPartner* manual contains information about using the DevPartner software.
- ◆ The *DevPartner Studio Quick Reference* provides an at-a-glance summary of DevPartner features accompanied by quick-start advice.
- ◆ The *DevPartner Advanced Error Detection Techniques* manual provides concepts and procedures to help you understand the use of your Compuware® DevPartner Error Detection software.
- ◆ The *Known Issues* file contains a list of known issues and technical notes for DevPartner Studio. The file is available in your installation directory, or you can access the latest Known Issues file from a link in the DevPartner ReadMe file.

Chapter 1

DevPartner Installation



- ◆ System Requirements
- ◆ Supported Environments
- ◆ Receiving Your License File
- ◆ DevPartner License Considerations
- ◆ DevPartner Triggering of Firewall Alarms
- ◆ Installed Features
- ◆ Installation
- ◆ Troubleshooting Your DevPartner Installation
- ◆ Migrating DevPartner Code Review Custom Rules and User Preferences

This chapter describes system requirements and installation information for your Compuware® DevPartner Studio® software.

System Requirements

All editions of DevPartner 8.2 require the following minimum configuration:

Table 1-1. Hardware

Processor	Pentium III, 733 MHz or faster
Memory	512 MB
Available Disk Space	500 MB
Display	1024x768, 16-bit color
Other	CD drive

Table 1-2. Operating Systems

Operating System	Editions	Browser and IIS
Windows XP (SP2) (32-bit only)	Professional, Tablet PC	IE 6.0 IIS 5.1
Windows Server 2003 (SP1) (32-bit only)	Standard, Enterprise, Web	IE 6.0 IIS 6.0
Windows Vista (32-bit only)	Business, Enterprise, Ultimate	IE 7.0 IIS 7.0

Supported Environments

DevPartner Studio supports the released version of the following environments.

Note: For a comprehensive list of supported languages and project types, refer to Appendix B of the *Understanding DevPartner* manual.

Table 1-3. Visual Studio Integration

Version	Editions	.NET Framework
Visual Studio 2005	Professional Edition, Team Edition for Software Architects, Team Edition for Software Developers, Team Edition for Software Testers, Team Suite (64-bit development is not supported)	.NET Framework 2.0 and 3.0* (Compact Framework is not supported)
Visual Studio 2003	Developer, Professional, Enterprise Architect	.NET Framework 1.1* SP1 (Compact Framework is not supported)
Visual Studio 6 (SP5 or SP6)	All	n/a

* See "[Microsoft .NET Framework](#)" on page 3 for additional information.

For information on features installed with each environment, see "[Installed Features](#)" on page 6. For a detailed list of all supported Visual Studio technologies, refer to the *Understanding DevPartner* manual.

Microsoft .NET Framework

DevPartner requires that the Microsoft .NET Framework 1.1 be installed on the host machine. This Framework provides system-level code needed by DevPartner. During installation, DevPartner will check for the .NET Framework 1.1 on your machine. If it is not found, DevPartner will add it during the installation. .NET Framework 1.1 will coexist with the .NET Framework 2.0 and .NET Framework 3.0.

Features Not Available in DevPartner 8.0 and Beyond

Support for FailSafe and Code Review for Visual Basic 6.0 was discontinued in DevPartner 8.0. The instrumentation code is obsolete. We recommend that you remove FailSafe instrumentation from your applications prior to installing DevPartner 8.2.

For information on removing instrumentation, refer to your FailSafe documentation.

Receiving Your License File

The DevPartner software requires a license file supplied by Compuware in order to execute beyond a 14-day evaluation period. Compuware provides a license file, `license.xml`, for each license of DevPartner that you purchase.

Your license file(s) will arrive by e-mail around the time that your product arrives, and is delivered to the person you designated when you placed your order.

Note: If you purchased DevPartner from a reseller, you can request a license file from the Compuware Web site at http://frontline.compuware.com/sw/license_default.asp, or by calling Worldwide License Management at 1-800-538-7822.

Complete information about installing and managing licenses can be found in *Distributed License Management Licensing Guide*.

Install the license file that you receive from Compuware by running the License Administration Utility (C:\Program Files\Common Files\Compuware\LAU4.exe). Note that you are limited to one 14-day evaluation period.

If your license file has not arrived by the time you would like to install DevPartner, please contact Worldwide License Management: 1-800-538-7822. Outside the USA and Canada, please contact your local Compuware office or agent.

If you have other Compuware products that use DLM and you choose to store your DevPartner license file in the same folder as those other license files, we recommend that you rename the DevPartner license file to prevent conflicts or accidental merging or replacing of license files.

If you already have a licensed Compuware product and would like to merge the license files, contact Technical Support (1-888-686-3427).

DevPartner License Considerations

All DevPartner products use Compuware Distributed License Management (DLM) to manage software licenses. DevPartner ships with version 4.1 of DLM. For complete information on license installation, refer to the *Distributed License Management Licensing Guide* on the DevPartner Studio CD.

You should be aware of the following considerations regarding your DevPartner software license:

- ◆ DevPartner can run with one of three types of permanent license:
 - ◇ A locally-installed license, called a node-locked (single-seat) license (does not require a license server installation)
 - ◇ A concurrent license stored within a License Manager database on a network server
 - ◇ A borrowed concurrent license running on a computer disconnected from a network
- ◆ DevPartner can run with a 14-day evaluation license. The 14-day evaluation period begins when any DevPartner feature is used.

Note: The System Comparison feature operates under your DevPartner license. Using the System Comparison user interface triggers the beginning of the 14-day evaluation period, regardless of whether the rest of the DevPartner features have been installed. Starting and using only the System Comparison service, however, does not consume a license and therefore does not trigger the beginning of the 14-day evaluation period.
- ◆ DevPartner supports a 30-minute idle session license timeout policy for concurrent licenses. If a concurrent license is being used for an Integrated Development Environment-hosted DevPartner product, the license is released and returned to the license pool if no DevPartner features have been used for 30 minutes (e.g., no analysis sessions active, no session files open).

- ◆ For data collection from a remote machine, DevPartner requires the DevPartner Remote Server license, as described in [“Installation and Licensing for Remote Data Collection”](#).
- ◆ Running DevPartner over a Windows Terminal Services connection uses one concurrent license per user. Node-locked licenses do not support use over a Terminal Services connection.
- ◆ Running DevPartner over a Windows Remote Desktop connection uses one concurrent license or a node-locked license.
- ◆ If you purchased DevPartner as part of certain product bundles, such as a Continuous Integrated Testing solution, simultaneous use of all products in the bundle will require only one license.
- ◆ DevPartner uses all available license paths to verify license information. If you experience lengthy DevPartner start-up delays, check your license path for invalid entries.

Installation and Licensing for Remote Data Collection

If you run components of your applications on remote systems, you can collect performance, coverage, and memory data from the remote machines and view that data on the user/client machine where you have installed DevPartner. To collect remote data, purchase the DevPartner Remote Server license for each remote machine from which you would like to collect remote data, or purchase one or more concurrent Remote Server licenses.

DevPartner Triggering of Firewall Alarms

To collect session data from remote machines, the DevPartner software connects to a previously installed service whenever DevPartner runs, either within Visual Studio or via `DPAnalysis.exe`. This service listens for interprocess communication traffic at the internet address 0.0.0.0 port 18441. This service connection may trigger some firewall alarms. You can configure your firewall to trust this address to discontinue these alarms. If your firewall is set to maximum security levels, it may prevent DevPartner remote data collection. Reconfigure your firewall to enable data exchange at the address 0.0.0.0 port 18441.

Installed Features

The features installed with DevPartner Studio Professional Edition and DevPartner for Visual C++ BoundsChecker Suite vary depending on the version of Visual Studio found on the machine on which you are installing, as described in the following tables. If multiple Visual Studio environments are found, you can install all applicable features or omit features for a specific environment.

The features installed with DevPartner Studio Professional Edition are listed in [Table 1-4](#).

Table 1-4. Installed Features for DevPartner Studio 8.2 Professional Edition

Microsoft Visual Basic 6.0	Microsoft Visual C++ 6.0	Microsoft Visual Studio 2003 or 2005
Performance Analysis	Performance Analysis	Performance Analysis
Coverage Analysis	Coverage Analysis	Coverage Analysis
	Error Detection	Error Detection
		Static Code Analysis
		Memory Analysis
		Performance Expert

The features installed with DevPartner for Visual C++ BoundsChecker Suite are listed in [Table 1-5](#).

Table 1-5. Installed Features for DevPartner for Visual C++ BoundsChecker Suite

Microsoft Visual Basic 6.0	Microsoft Visual C++ 6.0	Microsoft Visual Studio 2003 or 2005
Not Supported	Performance Analysis	Performance Analysis
	Coverage Analysis	Coverage Analysis
	Error Detection	Error Detection

Side-by-Side Visual Studio Operation

When the DevPartner installation program encounters both Visual Studio 2003 and Visual Studio 2005 on a target computer, it installs the DevPartner software into both IDEs. This double installation allows you to take advantage of the ability to develop code simultaneously in both environments.

If you install Visual Studio 2005 after DevPartner is installed, you can modify the DevPartner installation using the **Control Panel > Add or Remove Programs** option, or run DevPartner's installation program (`setup.exe`) and select the **Modify** option.

Installation

This section presents pre-installation information and describes the DevPartner installation procedure.

Before Installation

Before installing DevPartner, note the following:

- ◆ If you will be using DevPartner with Microsoft Visual Studio 2005 Team System, install Visual Studio Team Explorer before installing DevPartner Studio.
- ◆ Internet Explorer and the Microsoft Script Debugger are required by DevPartner. If supported versions of these products are not detected during installation, DevPartner will display a message with a link to more information.

Caution: If you are upgrading from a previous version of DevPartner Studio, refer to "[Migrating DevPartner Code Review Custom Rules and User Preferences](#)" on page 9 *before* uninstalling your previous version of DevPartner Studio.

To Install DevPartner

- 1 If you are running a previous version of DevPartner, uninstall your previous version and restart your machine. (If you would like to retain your existing code review databases, refer to "[Migrating DevPartner Code Review Custom Rules and User Preferences](#)" on page 9 before uninstalling DevPartner.)
- 2 Log in to an account with Windows administrator ('admin') privileges. You must be logged in with Windows administrator privileges to install DevPartner.
- 3 Disable your virus protection software.

The DevPartner installation program uses scripts that might trigger warnings from virus protection software. Remember to re-enable virus protection after you install the DevPartner software.

Note: Systems with the Data Execution Prevention (DEP) setting configured as `/NoExecute=Always On` and the CPU's Execute Disable bit enabled might prevent DevPartner from installing.

See [article number 875352 in the Microsoft Knowledge Base](#) for a detailed description of the Data Execution Prevention feature.

Note that if this setting is changed back to `AlwaysOn` after installation it will cause the DevPartner Visual Studio package to fail to load into Visual Studio.

- 4 Insert the DevPartner CD to start the installation and select the product to be installed. If installing DevPartner Studio Professional Edition, you can install DevPartner Studio, DevPartner Fault Simulator SE, or DevPartner System Comparison.
- 5 A series of screens will guide you through the installation process. The installation will prompt you to install a new code review rules database or use an existing rules database. This option is useful when you are sharing a rules database. If you choose to use a rules database built with a previous version of DevPartner Studio, refer to ["Migrating DevPartner Code Review Custom Rules and User Preferences"](#) on page 9.

The installation program detects Visual Studio 2003, Visual Studio 2005, Visual C++ 6.0, and Visual Basic 6.0 and, by default, installs all features compatible with all environments. To prevent DevPartner components from being installed, use the Component Selection screen to select the components *not* to be installed.

- 6 After a DevPartner Studio Professional Edition installation, you are prompted to install two additional products:
 - ◇ DevPartner Fault Simulator SE, which is a demonstration copy of the DevPartner Fault Simulator product. Fault Simulator simulates managed code exceptions, allowing you to test your .NET Framework error handling without leaving Visual Studio.
 - ◇ DevPartner System Comparison, which is a tool that allows you to identify differences between computer system or differences between different configurations of the same computer.

If either product already exists on the system, that installation option is disabled.

Troubleshooting Your DevPartner Installation

DevPartner captures a Microsoft Installer (MSI) log of details about the DevPartner installation. You can examine this log to help diagnose installation problems, or provide this log to a customer support engineer should you need to contact Compuware for support.

Depending on the DevPartner installation, the file is named `DPS82install.log`, `DPVC82install.log`, or `DPPACE82install.log` and is placed in the following location:

On Windows XP and Windows Server 2003 systems:

`C:\Documents and Settings\\Local Settings\Temp\`

On Windows Vista systems:

`C:\Users\\AppData\Local\Temp\DPS82install.log`

In addition to the MSI log, compile the following information:

- ◆ What software and version are you installing?
- ◆ What is your operating system and service pack?
- ◆ What previous version of the DevPartner software do you have installed?
- ◆ Did you have any problems removing the previous version?
- ◆ Indicate if you will submit an MSI log as an attachment.
- ◆ What error message did you receive during the install?
- ◆ Was the installation from an account with full administrative privileges?
- ◆ Was the installation done locally or remotely? If done remotely what software was used?
- ◆ Did you disable your anti-virus software before the installation?
- ◆ Is your DEP setting configured as `/NoExecute=OptIn`?

Migrating DevPartner Code Review Custom Rules and User Preferences

If you have a previous installation of DevPartner Studio and you have customized your code review rules and preferences databases, you should migrate your database files to DevPartner Studio 8.2. This ensures that your changes are not lost during the upgrade.

DevPartner provides two utilities that automate this migration process:

- ◆ `crupdaterules.exe`: Migrates existing 7.x or later rules into the 8.2 rules database
- ◆ `crupdateprefs.exe`: Migrates existing 7.x or later user settings into the 8.2 preferences database

Using these utilities will migrate your customized rules and preferences into the new rules and preferences databases.

Prior to the Migration

- 1 Copy the existing `CRRules.dpmdb` and `CRPrefs.dpmdb` files (`CR7Rules.dpmdb` and `CR7Prefs.dpmdb` for DevPartner 7.x) to another location for safe-keeping before you uninstall DevPartner. By default, database files created with previous versions of DevPartner are located in `\Program Files\Compuware\DevPartner Studio\CodeReview` (`\CodeReview7` for DevPartner 7.x). (The DevPartner uninstall process makes a backup copy of your rules and preferences databases. If you have already uninstalled DevPartner without making a backup copy of your databases, you can use the automatically created backup files found in the DevPartner installation directory in `\Code Review\Backup`.)
- 2 Uninstall the previous version of DevPartner Studio.
- 3 Install DevPartner Studio 8.2. On the installation screen that prompts for creating a new rules database or using an existing one, select the new rules database option. You will be updating the new database after the installation.

The new databases are placed in the following location:

On Windows XP and Windows Server 2003 systems:

`C:\Documents and Settings\All Users\Shared Documents\Code Review`

On Windows Vista systems:

`C:\Users\Public\Public Documents\Code Review`

- 4 Copy the new `CRRules.dpmdb` and `CRPrefs.dpmdb` files created by the DevPartner 8.2 installation to a location other than the one used in step 1, so you do not overwrite the original rules and preferences database files.

Proceed to [“Migrating the Rules Database”](#) and/or [“Migrating the Preferences Database”](#) to perform the desired migration.

Migrating the Rules Database

- 1 Start a DOS session from the console window.
- 2 At the DOS prompt, change to the directory where you installed DevPartner. By default, DevPartner is installed in `\Program Files\Compuware\DevPartner Studio\CodeReview`. This directory contains the migration utility.

- 3 From that directory, enter the command `crupdaterules` followed by the path to the prior version of the rules database. For example:

```
crupdaterules C:\MyOldRulesDb\CRRules.dpmdb
```

The command string you use must point to the location of the rules database file being migrated and should be entered as a single line.

Your existing rules will be migrated into the new DevPartner code review rules database.

Migrating the Preferences Database

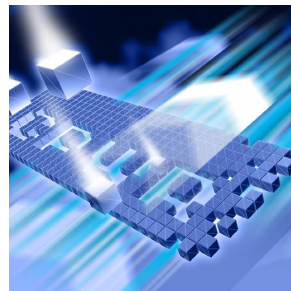
- 1 Start a DOS session from the console window.
- 2 At the DOS prompt, change to the directory where you installed DevPartner. By default, DevPartner is installed in `\Program Files\Compuware\DevPartner Studio\CodeReview`. This directory contains the migration utility.
- 3 From that directory, enter the command `crupdateprefs` followed by the path to the prior version of the preferences database. For example:

```
crupdateprefs "C:\MyOldPrefsDb\CRPrefs.dpmdb"
```

Note that the command string you use must point to the location of the preferences database file being migrated.

Your existing preferences will be migrated into the new DevPartner code review preferences database.

Index



A

administrator privilege 7

B

BoundsChecker Suite 6

C

Code Review for Visual Basic 6.0 3

crupdateprefs 9, 11

crupdate.rules 9

D

data execution prevention setting 8

DEP setting 8

DevPartner

 features 6

 migrate custom rules 10

 migrate custom user preferences 11

 upgrading 7

DevPartner FaultSimulator SE license 4

DevPartner for Visual C++ 6

E

evaluation license 4

F

FailSafe 3

Fault Simulator SE 8

L

license

 evaluation 4

 timeout policy 4

license file

getting technical support 4

installing 3

obtaining 3

M

migrate code review preferences 11

migrating code review rules 10

multiple IDEs 6

P

previous version of DevPartner 7

R

requirements 1

S

scripts, virus protection interference 7

support 4

system comparison utility 8

system requirements 1

T

technical support 4

timeout of license 4

V

Visual Studio 2005, installed after DevPartner 7

