

ControlPoint

Software Version 5.9.0

Redistribute ControlPointMetaStore Data Files Technical Note



Document Release Date: August 2020
Software Release Date: August 2020

Legal notices

Copyright notice

© Copyright 2018-2020 Micro Focus or one of its affiliates.

The only warranties for products and services of Micro Focus and its affiliates and licensors (“Micro Focus”) are as may be set forth in the express warranty statements accompanying such products and services. Nothing herein should be construed as constituting an additional warranty. Micro Focus shall not be liable for technical or editorial errors or omissions contained herein. The information contained herein is subject to change without notice.

Documentation updates

The title page of this document contains the following identifying information:

- Software Version number, which indicates the software version.
- Document Release Date, which changes each time the document is updated.
- Software Release Date, which indicates the release date of this version of the software.

To check for updated documentation, visit <https://www.microfocus.com/support-and-services/documentation/>.

Support

Visit the [MySupport portal](#) to access contact information and details about the products, services, and support that Micro Focus offers.

This portal also provides customer self-solve capabilities. It gives you a fast and efficient way to access interactive technical support tools needed to manage your business. As a valued support customer, you can benefit by using the MySupport portal to:

- Search for knowledge documents of interest
- Access product documentation
- View software vulnerability alerts
- Enter into discussions with other software customers
- Download software patches
- Manage software licenses, downloads, and support contracts
- Submit and track service requests
- Contact customer support
- View information about all services that Support offers

Many areas of the portal require you to sign in. If you need an account, you can create one when prompted to sign in. To learn about the different access levels the portal uses, see the [Access Levels descriptions](#).

Redistribute ControlPointMetaStore data files for maximum performance

For best performance, **ControlPointMetaStore** database files should be evenly distributed across all available drives in your environment. If they are not distributed evenly, follow the steps in this document to redistribute them in order to maximize the I/O bandwidth of the four largest types of data and index database files:

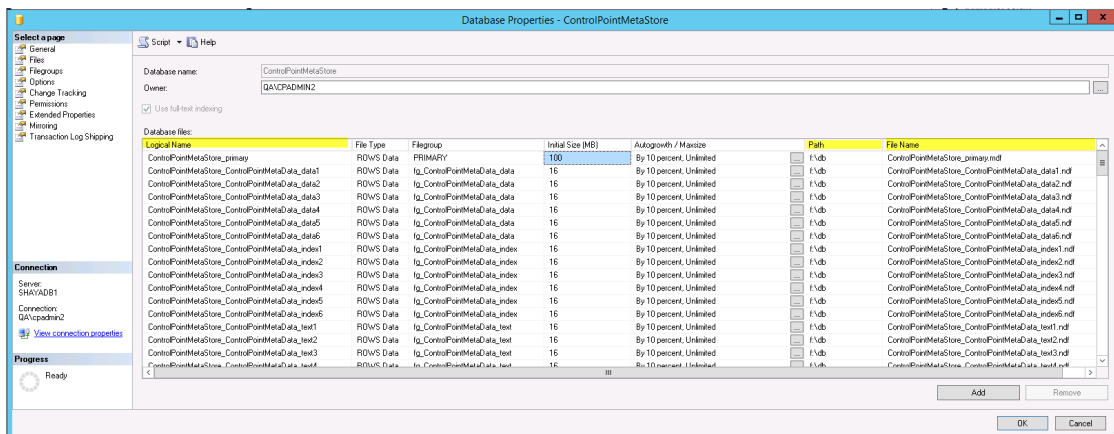
- ControlPointMetaStore_ControlPointMetaData_data1 .. n
- ControlPointMetaStore_ControlPointMetaData_index1 .. n
- ControlPointMetaStore_Metadadata_data1 .. n
- ControlPointMetaStore_Metadadata_index1 .. n

Examine the MetaStore Database configuration

Examine the metastore database configuration to identify the files to redistribute.

To examine the MetaStore database configuration

1. Log into Microsoft SQL Server Management Studio (SSMS).
2. In the Object Explorer pane on the left side of the interface, expand the **Databases** entry.
3. Under **Databases**, right-click the **ControlPointMetaStore** database, and then click **Properties**.
4. In the Database Properties dialog box that appears, click **Files** under **Select a page** in the left pane.



5. Identify the critical data files.

Most of the data stored in the database is limited to several critical files. It is important that these files are distributed across the available set of drives in round-robin fashion. The **File Name** for the critical files are as listed below, where **N** represents a number from 1 to 16:

ControlPointMetaStore_ControlPointMetaData_dataN.ndf

ControlPointMetaStore_ControlPointMetaData_indexN.ndf

ControlPointMetaStore_Metadata_dataN.ndf

ControlPointMetaStore_Metadata_indexN.ndf

There are different ways to distribute files. For example, you can do it using SQL commands, as described on the page <https://dba.stackexchange.com/questions/52007/how-do-i-move-sql-server-database-files> or by using Microsoft SQL Server Management Studio (SSMS), as described in [Redistribute files in an optimal fashion, below](#).

NOTE: For each schema, distribute all n files across the available set of drives in round-robin fashion. Start file distribution for each schema at the first drive in the set regardless of where you distributed the last file of the previous schema.

For example, suppose you have three drives (E, F, and G) and there are four database files for each schema (n = 4). You would start distributing files as follows:

Path	File name
E:\db\	ControlPointMetaStore_ControlPointMetaData_data1.ndf
F:\db\	ControlPointMetaStore_ControlPointMetaData_data2.ndf
G:\db\	ControlPointMetaStore_ControlPointMetaData_data3.ndf
E:\db\	ControlPointMetaStore_ControlPointMetaData_data4.ndf
E:\db\	ControlPointMetaStore_ControlPointMetaData_index1.ndf
F:\db\	ControlPointMetaStore_ControlPointMetaData_index2.ndf
G:\db\	ControlPointMetaStore_ControlPointMetaData_index3.ndf
E:\db\	ControlPointMetaStore_ControlPointMetaData_index4.ndf

Note how both the last file of the ControlPointMetaStore_ControlPointMetaData_data schema and the first file of ControlPointMetaStore_ControlPointMetaData_data are both on the E drive.

Redistribute files in an optimal fashion

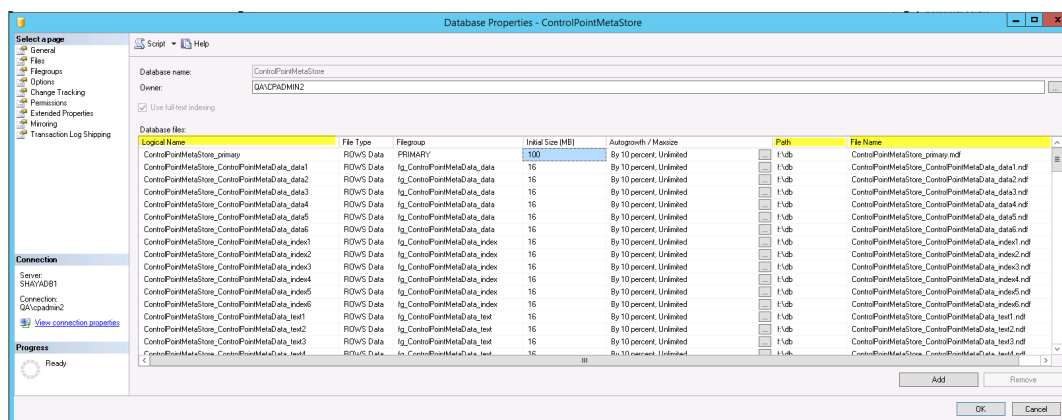
For optimal performance, redistribute database across the SQL server drives available.

Before you begin

Identify the files to redistribute and develop a plan to redistribute them as described by [Examine the MetaStore Database configuration, on the previous page](#).

To redistribute files

1. Stop all ControlPoint services.
2. Log into Microsoft SQL Server Management Studio (SSMS).
3. In the Object Explorer pane on the left side of the interface, expand the **Databases** entry.
4. Under **Databases**, right-click the **ControlPointMetaStore** database, and then click **Properties**.
5. In the Database Properties dialog box that appears, do the following.
 - a. For each schema in the **Logical Name** column that you want to move (as previously described), note its actual location on disk in the **Path** and **File Name** columns.



For example, given the previous figure:

- **Logical Name:** ControlPointMetaStore_ControlPointMetaData_data1
 - **Path:** F:\db\
 - **File Name:** ControlPointMetaStore_ControlPointMetaData_data1.ndf
 - **Logical Name:** ControlPointMetaStore_ControlPointMetaData_data2
 - **Path:** F:\db\
 - **File Name:** ControlPointMetaStore_ControlPointMetaData_data2.ndf
- b. Note the **Path** and **File Name** values for the ControlPointMetaStore_primary.mdf file. You will need this information when reattaching the database in a later step.
 - c. Click **Cancel**.
6. Detach the **ControlPointMetaStore** database as follows:
 - a. Right-click the **ControlPointMetaStore** database, click **Tasks**, and then click **Detach**.
 - b. On the Detach Databases dialog box, click **OK**.
 7. Distribute the database files you noted to new locations and keep track of their new paths.
 8. Right-click **Databases**, and then click **Attach**.

9. Click **Add**, browse to the ControlPointMetaStore_primary.mdf file, select it, and click **OK**.
10. For each database file you moved, set its **Current File Path** to the correct value from your notes.

If the **Current File Path** value for a particular file is incorrect, the **Message** column contains the text "Not Found". You must correct the path for any such entries because SSMS will not let you attach the database until all files point to the correct location.
11. Click **OK**.

SSMS attaches the database, which makes it ready for use.
12. Restart **ControlPointMetaStore** and all other ControlPoint services that you stopped.