

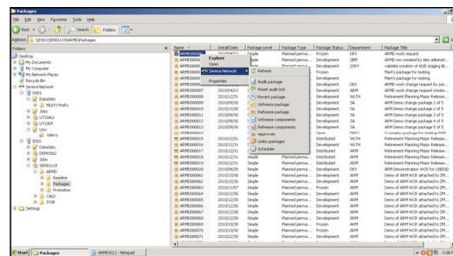
ChangeMan ZDD: Increase Productivity, Efficiency, and Flexibility

Desktop development of mainframe applications is commonplace today. Powerful IDEs like Enterprise Developer provide a productive environment for editing and testing today's mainframe applications. ChangeMan ZDD solves the integrity, security, and resource issues associated with desktop development by mapping the mainframe server as a drive on the desktop, and developers can access mainframe assets directly and immediately from their desktop.

Product Highlights

OpenText™ ChangeMan ZDD integrates desktop IDEs into the lifecycle, providing direct access to mainframe assets, eliminating mass file transfers and extending all the protection of OpenText™ ChangeMan ZMF to development on the desktop.

Because ChangeMan ZDD integrates into the intuitive Microsoft Windows Explorer interface, it eliminates the need for mainframe training, which provides tremendous staff flexibility. The edit-in-place capability of ChangeMan ZDD prevents software components from getting lost or overlaid during manual upload/download procedures. Code can't be lost because of desktop crashes or laptop theft. Audit trails are kept intact. ChangeMan ZDD gives desktop programmers direct access to software assets residing on the mainframe without file transfers and extends its powerful enterprise change management solution by transparently integrating the desktop development tool of choice.



Integrated to Leverage Mainframe and Distributed Systems

ChangeMan ZDD is a software infrastructure technology that makes mainframe data sets and job output appear in Windows Explorer and other desktop applications as though they are local files or files on a Windows network. It simulates a network file system on a Windows platform that is networked with a z/OS operating system.

Benefits

- Secure access to z/OS and applications managed under ChangeMan ZMF
- Reduces mainframe resource usage
- Protects against lost code and overlays by eliminating mass file transfers
- Supports the flexibility of the Windows desktop while providing the governance of the mainframe
- Approve, deploy and release mainframe applications from Windows

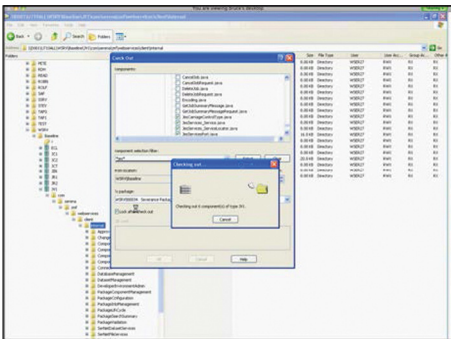
Connect with Us

[OpenText CEO Mark Barrenechea's blog](#)



From your PC, you can access files, execute jobs, and examine output from jobs that reside on a z/OS server. No special execution environment or programming interface is required.

ChangeMan ZDD gives you desktop access to ChangeMan ZMF. Instances, applications, packages, and libraries appear as folders in Windows Explorer and other PC applications. This allows you to perform many ChangeMan ZMF functions from your PC with all of the software configuration management rules and restrictions set up in ChangeMan ZMF still applying.



Access ZMF and z/OS Information from Popular Desktop Tools

ChangeMan ZDD enables ubiquitous access to the mainframe from ODBC, .NET, and XML tools, including Excel, Microsoft Project, and Crystal Reports. In addition, it provides an elegant interface for submitting mainframe jobs, viewing JES input/output queues, and integrating mainframe testing environments.

Features

- Full ChangeMan ZMF lifecycle support
- ChangeMan ZMF Enterprise Release Option (ERO)
- Maps z/OS file system as a windows drive letter
- Supports both zFS and z/OS file systems
- Seamless access to datasets and JES job queue on z/OS
- Supports multiple editors
- Supports SAF, RACF, ACF2, or Top Secret

System Requirements

For full details of system compatibility check the Support Line site: <https://supportline.microfocus.com/prodavail.aspx>

Learn more at www.microfocus.com/opentext